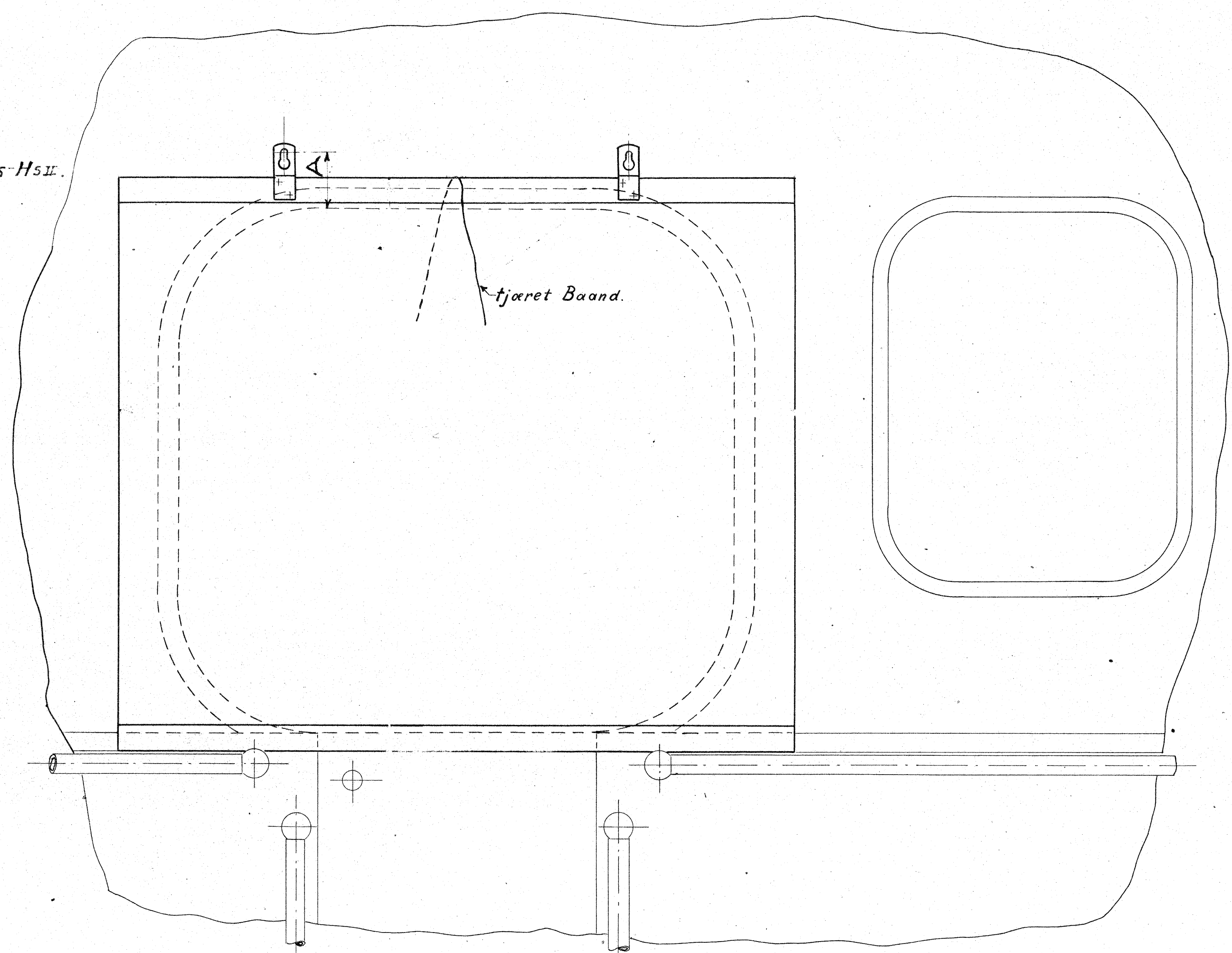
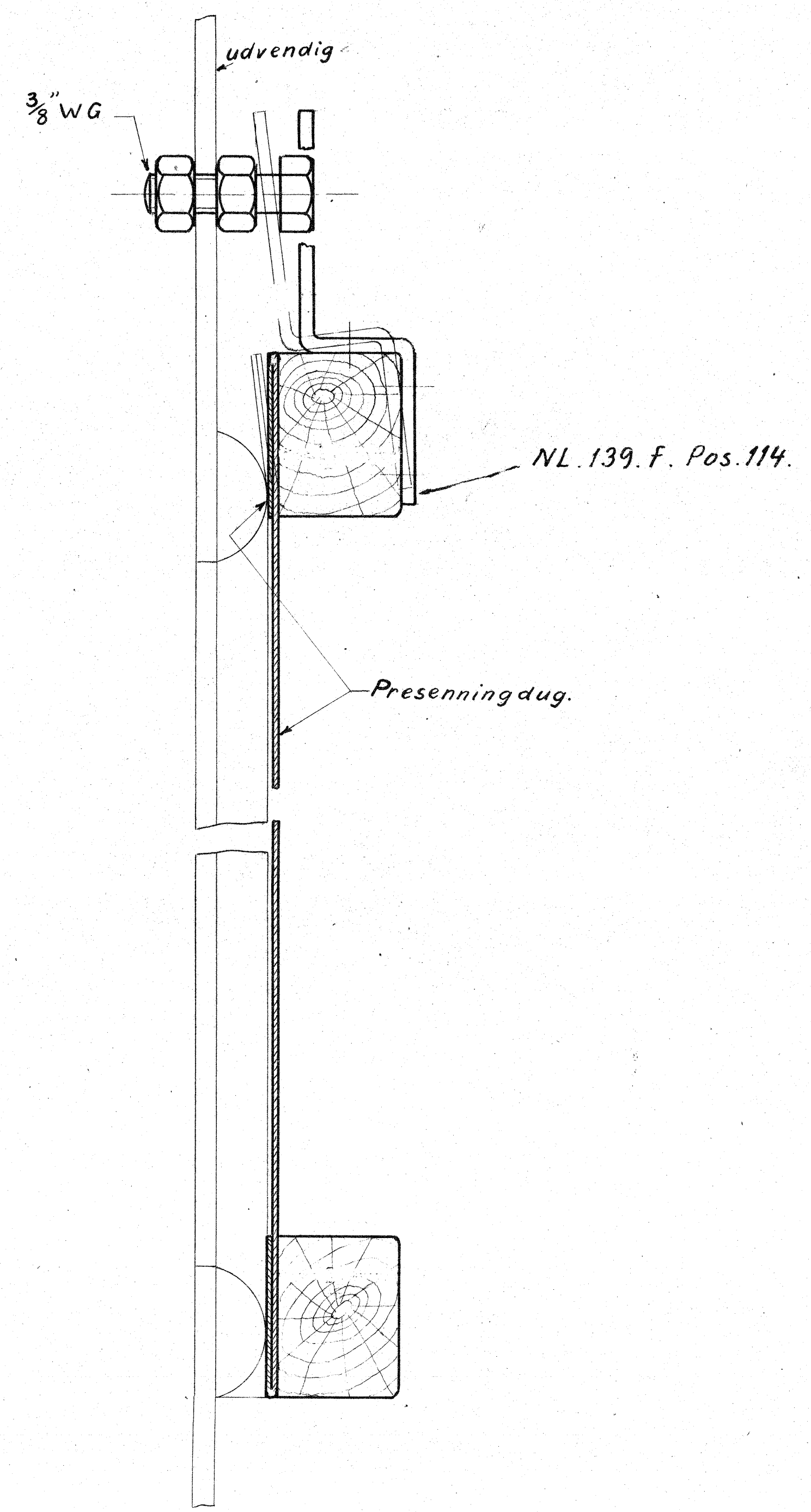
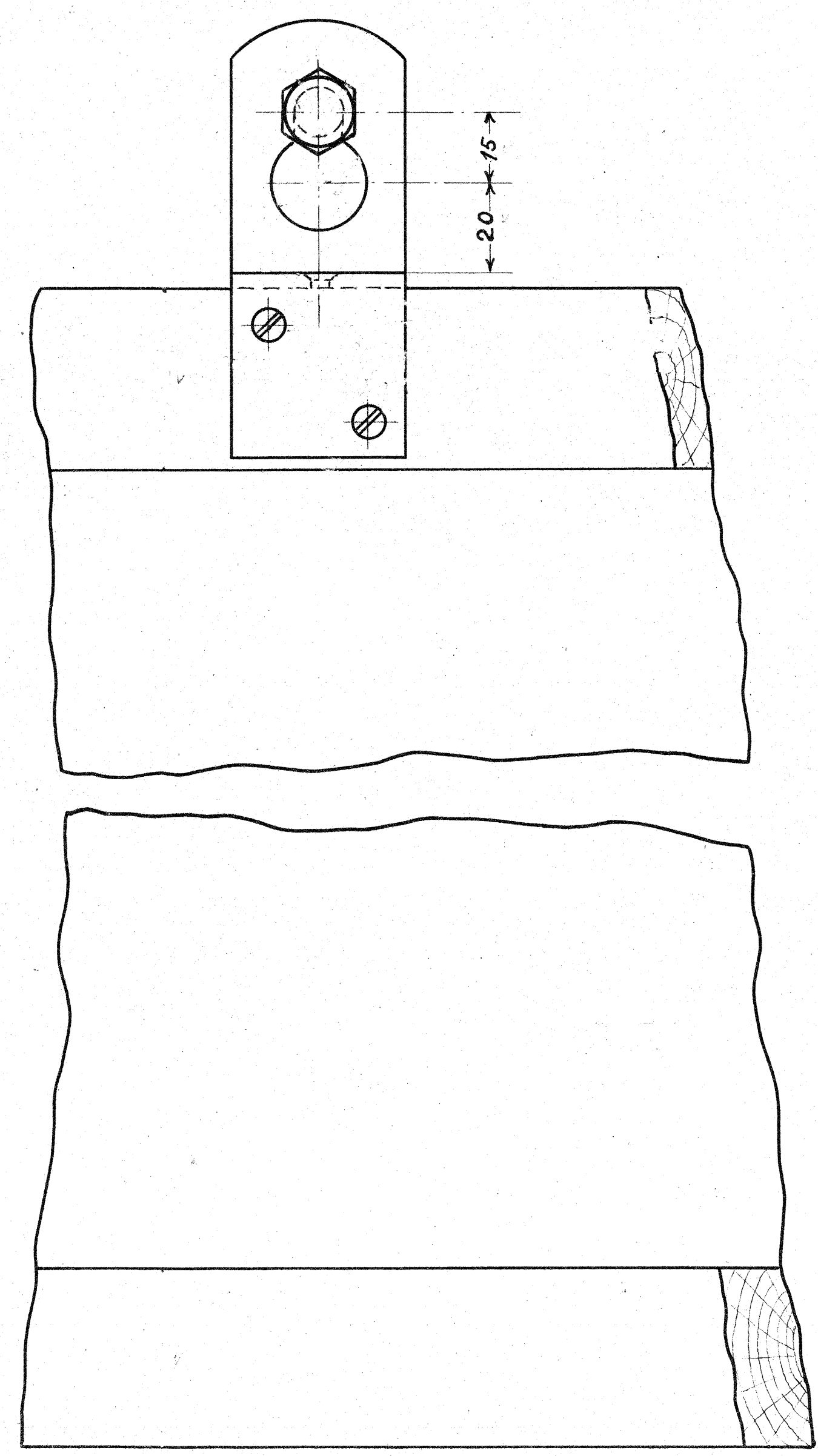


A = 80 til Ltr. Q  
 A = 90 " " F<sub>II</sub>-H<sub>S</sub>-H<sub>SII</sub>.



For Tøpsidesejl til F<sub>II</sub>-Q<sub>I</sub>-Q<sub>II</sub> se Tegn. NL. 139. a. Pos. 13-14-15.  
 " " " H<sub>S</sub>-H<sub>SII</sub> " " NL. 139. c. " 27.



*Rekwi* 25/10 48

Ærindringer	Sidesejl rettet til Tøpsøj	24-1-37	V.S.		
	Rev	A	19-10-48	Ldf	
De danske Statsbaner. Maskinafdelingen.		Maalestok	Tegn.		
		1:5	Kalk.	26-11-34	K.F.P.
		1:1	Rev.	26-11-34	V.S.
Arrangement af Tøpsidesejl. til Loko: Litra F <sub>II</sub> , H <sub>S</sub> , H <sub>SII</sub> og Q.		A		F <sub>II</sub> . 86.c.	